



**First choice with Military & Law nforcement-Worldwide**

**“REAL LIFE TRAINING”**

[www.BreachingTechnologies.com](http://www.BreachingTechnologies.com)

## BTI Shotgun Hinge Door Manual

Model Type: 06  
BTI Part Number: SDH

Revised: 18 July 2017

## **End Use License Agreement**

**BTI Breaching Doors are manufactured using a patented socket or panel system installed in the frame and door. It should be specifically noted that the Purchaser must use the BTI patented engineered pins or panels when breaching the door. Any use of a substitute product is strictly prohibited and would constitute a violation of BTI policy and thereby be in default of this Licensing Agreement notification. The proprietary information provided on the Serial Number plate attached to each door is meant to serve as a notification of the BTI Licensing Agreement.**

# **IMPORTANT NOTICE!!**

**ATTN: BREACHING TRAINER**

**Please deliver this notice to the  
BREACHING TRAINER**

**BTI Breaching Pins and/or panels are required and MUST be used for training on ALL BTI Breaching Doors. The use of substitute pins or panels will result in loss of warranty.**

**Pins and panels can be obtained by going to our web site:**

**[www.breachingtechnologies.com](http://www.breachingtechnologies.com)**

**Contact BTI for a price quote by emailing:**

**[sales@breachingtechnologies.com](mailto:sales@breachingtechnologies.com)**

Thank you for your purchase and use of the BTI Breaching Door system. This innovative and patent pending training device provides realistic training scenarios that are discussed on the following pages.

### **Warranty**

Your new BTI Training door includes a 1-year manufacturer's warranty that covers quality and workmanship or 1500 breaches, whichever comes first. If at any time you are unsatisfied with this product or its operation, please feel free to contact us using any of the options listed under contacts below.

### **Replacement Parts**

Although we don't anticipate any items that would need replacing other than the skin of the door, please contact us to discuss these items.

### **Maintenance**

Paint scratches should be touched up to prevent rust from occurring. While any paint will suffice, we recommend *RUST-OLEUM* in Hammered Black.

### **Contacts**

You may contact BTI using any of the following methods:

Mail: Breaching Technologies Inc.  
P.O. Box 701468  
San Antonio, Texas 78270

Web: [www.breachingtechnologies.com](http://www.breachingtechnologies.com)  
Phone: (210) 590-5152  
(866) 552-7427 toll free  
Fax: (210) 590-5193  
Email: [delj2121@sbcglobal.net](mailto:delj2121@sbcglobal.net)

### **Caution**

**This BTI product weighs approximately 200 lbs. The door should be secured by insertion of Hinge Panels, Knob, and Lock Panels or other means during transport and moving. The movement of the unlatched door can and has caused injury.**

## **Shotgun Hinge Breaching Door Operation**

Your new breaching door, simulating a standard commercial or residential door, has been designed for the purpose of repeated forced entry training using a shotgun. Training with the BTI door accurately replicates the impact of a shotgun projectile on door hinges, locks, and knob hardware causing the door to yield and allowing entry.

### **Door Installation**

This door may be mounted in a training structure, range, shot house, live fire facility, etc. It may also be utilized with the optional *freestanding kit*. The *freestanding kits* are interchangeable between all of BTI's Breaching Doors. Diagrams for mounting the door in a standard wall opening can be seen on the last page of this manual. Conversely an example of the typical door setup for freestanding training can be seen on the second to last page.

#### **Wall Installation**

Installation of the BTI training door into an existing opening or new frame type structure is shown in the accompanying diagram on the last page of this manual. Provisions for mounting the training door in a "pre-hung" fashion have been provided in the four metal mounting ears. Alternate means of mounting such as face mounting or welding are up to the purchaser; however, BTI Inc. cannot warrant products that are mounted in ways that weaken the door structure or are inconsistent with factory design and testing.

#### **Free Standing**

The Free Standing Kit may be installed to allow the door to be utilized in a multitude of locations and scenarios. The accompanying diagram, on the second to last page, shows the assembly method and mounting hole locations for a typical BTI door system. Your freestanding kit includes stakes for anchoring on soft surfaces such as gravel and asphalt. Alternate methods using concrete anchors or similar methods may be used on hard surfaces.

### **Caution**

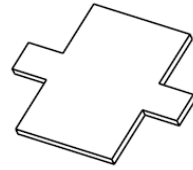
**It should be noted that the door design incorporates funneling type structures at the shotgun firing areas to minimize splatter and ricocheting of fired rounds. The down range areas should be evaluated when installing the door to make certain it is a safe to shoot area. The door is reinforced to provide realistic "shoot and kick" training. The area the door falls into should be clear and the door should fall flat. The door should never be located with an incline behind it or any type of obstruction that could cause permanent damage to the door or its hinges.**



## Consumables

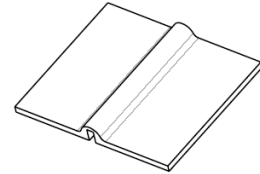
### **Lock/Knob Panels**

With the purchase of your BTI shotgun-training door, you received a quantity of shotgun lock/knob breaching panels (pictured to the right). Each of the panels can be used twice. Rotate the panels 180° and reinsert them into the doorjamb to use again.



### **Hinge Panels**

With the purchase of your BTI shotgun-training door, you also received a quantity of shotgun hinge breaching panels. The panels are either grooved or solid (a grooved panel is pictured to the right). The grooved panels represent a single shot breach on a hinge. The solid panels require multiple shots to cause failure allowing for differing techniques and scenario training.

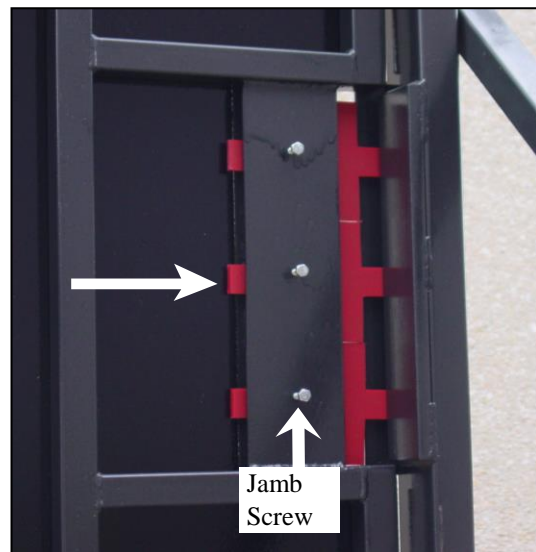
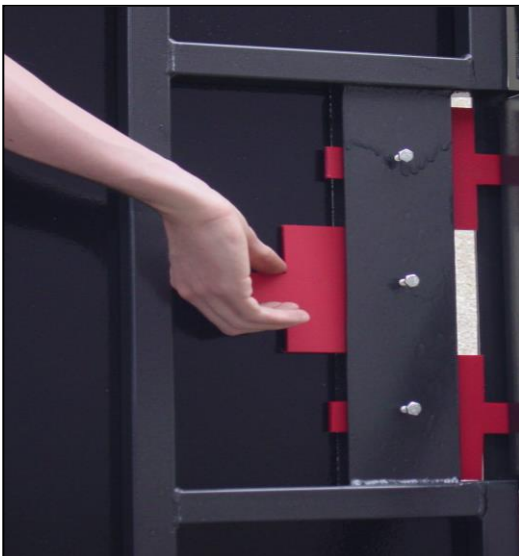


## Door Setup

Your new breaching door has been designed to simulate a number of different scenarios for forced entry training. These include doors containing up to 6 breaching panels: 1 Door Knob, 2 Dead Bolts, and 3 Hinges. This door is meant to replicate a full hinge and lock breach; however, it could be used with only hinge panels or any other combination of panels the trainer chooses.

### **Lock/Knob Panels**

After closing the door, the desired type and quantity of BTI lock/knob panels are inserted into the door (as shown below). Due to deformation of the panels during the breach, a jamb screw is provided to secure the panels in place.

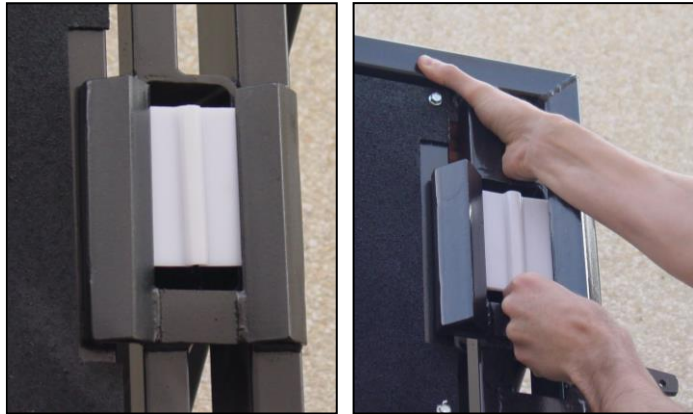


## **Hinge Panels**

With the door closed insert the hinge panels into their locations (as seen below). Make sure that the hook on the door traps the hinge. If there is resistance to loading the hinge panel reach through the gap in the side of the door and pull it fully closed (as seen in the picture below and to the right).

## **Door Breaching**

The BTI Shotgun Breaching Door has been designed to provide realistic training utilizing low cost blanks, birdshot, or game loads. More costly frangible ammo (AVON type) can be utilized if desired. **Due to safety reasons, buckshot, steel shot and slugs are not recommended due to the increased potential for ricochets.**



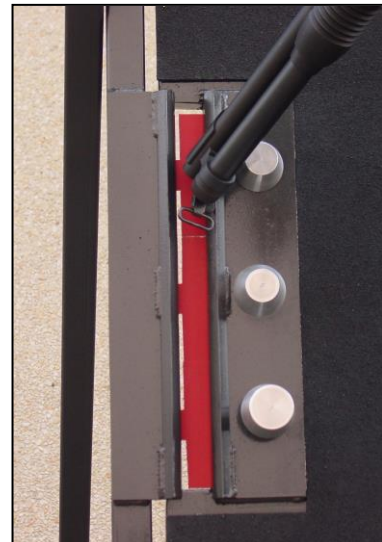
For increased safety and door longevity, we recommend using BTI Frangible Shotgun Training Rounds on your new Shotgun Door. When used properly, all of the material in the round disintegrates on impact and eliminates virtually all splash-back and ricochet.

## **Caution**

**Rounds fired during the breaching operation may damage nearby property and personnel in the line of fire. The door has been designed to promote the glancing impact of rounds on the structural members, and as a result, ricochets of rounds away from the trainee are highly likely. If you are unsure of your mounting methods and location, please consult a professional.**

## **Lock/Knob Panels**

The BTI Shotgun door contains features that require the trainee to locate shots in the proper place to effectively breach the door. When the lock/knob panels are inserted into the structure, the tab of the panel (simulating the bolt of the lock or door knob) is not exposed. This forces the trainee to properly place the shot at a location that would sever the tab (bolt in real situations). Improperly placed shots with this product, as in real situations, will not sever the bolt, resulting in a failed breach. An example of a properly aligned shot is seen to the right.



## **Hinge Panels**

Similarly the hinge panels require the proper location of shots to fully fracture and clear the door for entry. The grooved hinges will fracture after a single shot made in the top, bottom, or center of the hinge panel. The solid hinge panels often require two shots to yield; one shot in the top of the hinge and one shot in the bottom. An example of a center shot on a grooved hinge is depicted at the right.



## **Risk Mitigation**

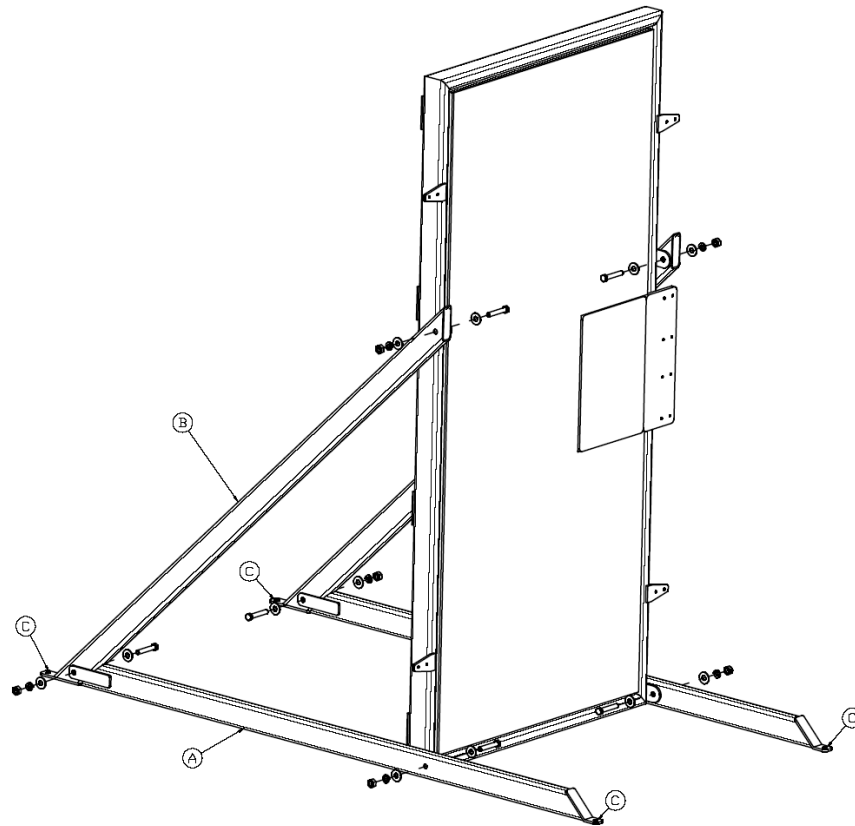
Proper safety equipment and eye protection should be utilized at all times with this product. Blanks are the preferred shotgun load for the training doors as they effectively recreate the shotgun breaching process and substantially lower the likelihood of any accidental injury. The use of game load is completely safe when used properly; however, they do offer the opportunity for ricochet if the trainee positions the gun in the wrong place or accidentally misfires into the steel frame of the door or the structure surrounding the door.

## **Training**

The proper training use of this breaching door will provide invaluable experience to all that invest in the technique it develops. It has been design to not only introduce people to a scenario they are likely to face but to improve the trainees accuracy, efficiency, and reaction time through muscle memory and realistic breaching time. The overall trainee development will be vastly improved in a low-cost/repeatable method, boosting both trainee effectiveness and confidence.



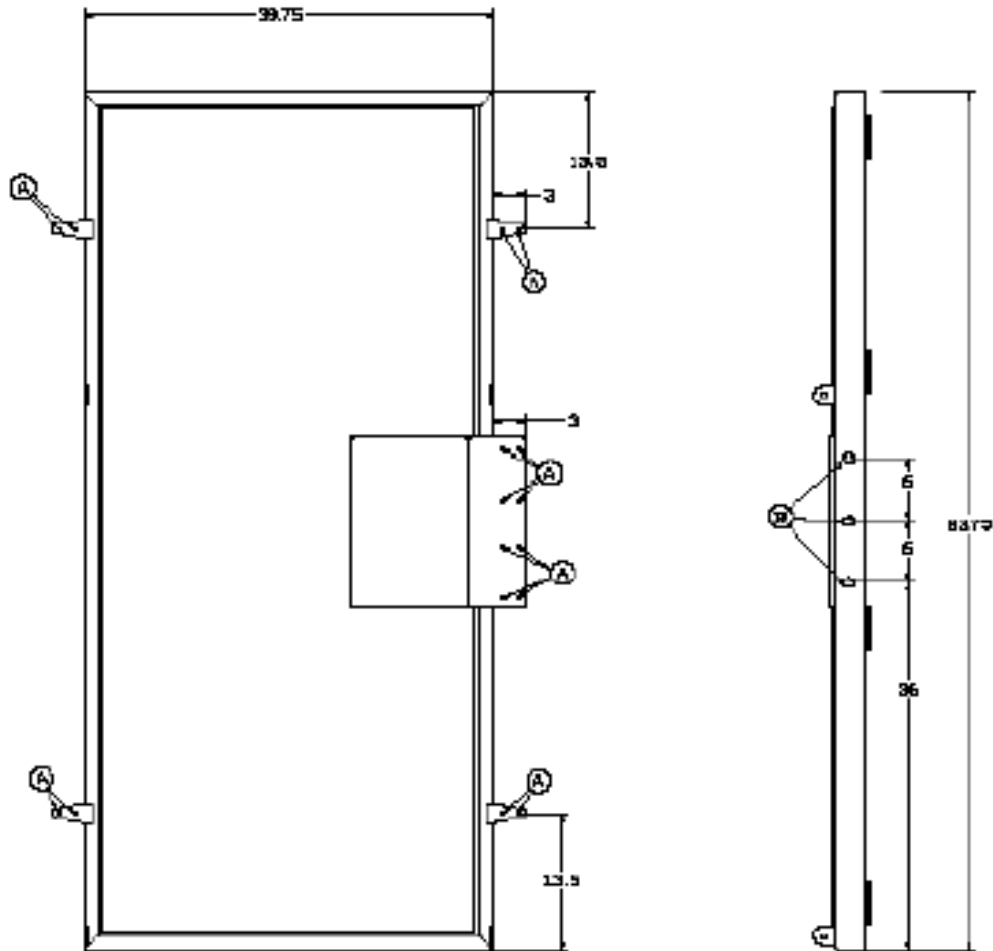
# FREE STANDING KIT ASSEMBLY



## ASSEMBLY INSTRUCTIONS:

1. LOCATE BASES "A" AND BRACES "B"
2. ASSEMBLE THE BASE "A" TO BRACE "B" USING THE 1/2" X 3" BOLTS AS SHOWN.
3. ATTACH THE LEGS TO THE DOOR USING THE 1/2" X 3" BOLTS AS SHOWN.
4. ANCHOR THE DOOR ASSEMBLY TO THE GROUND USING THE SUPPLIED HARDWARE OR ALTERNATE METHOD USING ANCHOR HOLES "C"

# WALL INSTALLATION



## INSTALLATION INSTRUCTIONS:

1. INSERT TRAINING DOOR INTO 39.75" X 83.75" OPENING AS SHOWN.
2. TRAINING DOOR IS THEN SECURED WITH CUSTOMER SUPPLIED 1/4" LAG BOLTS OR SIMILAR MEANS UTILIZING THE 16-1/4" MOUNTING HOLES 'A' PROVIDED.
3. WHEN MOUNTING INTO WALLS, HOLES IN THE EXISTING FRAME SHOULD BE PROVIDED TO ALLOW THE REMOVAL OF SPENT PINS AT LOCATIONS 'B' ALTERNATIVELY, A 1/4" GAP OR MORE BETWEEN THE FRAME AND STRUCTURE IS NORMALLY SUFFICIENT TO EJECT STUCK PINS.